

PART - A**TIME: 2hrs 15 min****Marks: 30**

Instructions: 1. 15 minutes allocated to read the question paper. 2.30 hours allocated to write answers.

2. Part-A must be answered in a separate answers sheet.

3. Students can take Part-A (Question Paper) with them.

4. Part-B (Bit Paper) should tag to the answer sheet and give them to INVIGILATOR

SECTION - 1

NOTE: 1 Answer the following. Questions

2 Each question carries 1 Mark

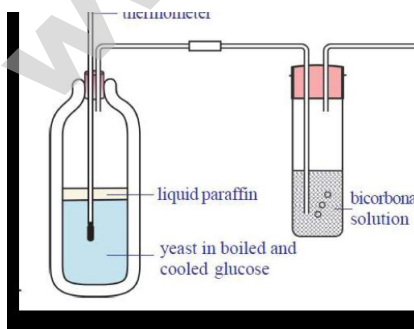
- 1) Write the uses of pleura, pericardium, meningitis, and skull ?
- 2) State two similarities between aerobic and anaerobic respiration
- 3) If we press tongue against the palate we can recognise taste easily. Give reasons?
- 4) There is a water scarcity in a place. Which irrigation methods you suggest to the farmers of that place?

SECTION - II

NOTE: Answer any five questions

2 Each question carries 1 Mark

- 5) Suggest methods to reduce consumption of fossile fuels? -
- 6) How nutrition occurred bacteria and fungi
- 7) What happens if epiglottis and diaphragm absent in human body?



8) Write aim and inference of this experiment shown in the diagram

9) Why the pyramid of energy is always upright?

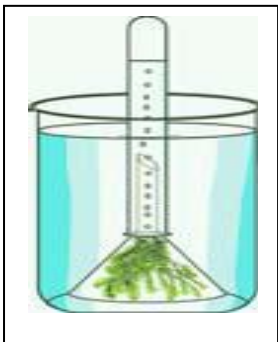
SECTION - III (4 x 4 = 16 Marks)

10 write the differences between the respiration occurred when oxygen available not available

OR

Write the different types of evidences produced by Charles Darwin to support his Evolution theory

11) Observe the experiment in the diagram and answer the questions



1. What is the aim of the experiment?
2. How are the apparatus arranged? And label the parts.
3. Why do we use only Hydrilla plant / any aquatic plant for this experiment?
4. What precautions to be taken while doing this experiment?
5. What is the gas accumulated in the test tube? How do you test the accumulated gas it?

Or

Write the the procedure and observations to study the external and internal features of sheep kidney

. 12) observe the table and answer the following questions

sn	Name of the gland	location	hormone	function
1	pituitary	Floor of brain	Somato tropin Thyrotrophic gonadotrophin	Growth of bones Activity of thyroid gland
2	Thyroid	neck	Thyroxine	General growth rate and metabolic activity
3	ovary	Abdomen cavity	Estrogen	Growth of the uterus and skeleton of the pelvis Control of the 28 days menstrual cycle in females

4	testis	scrotum	Testosterone	Growth of hair on face, muscular development, deepening of voice, normal sexual behavior and development of male sex organs.
5	adrenal	Attached to kidneys	Adrenaline	Increase in heart-beat rate. Rise in blood sugar. kidneys Dilation of the coronary artery

A what are the different hormones secreted by pituitary gland

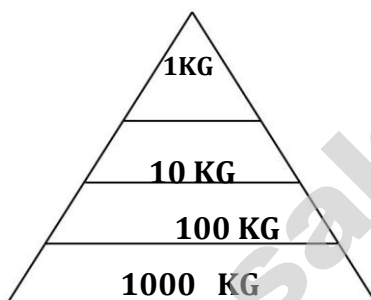
B which gland attached to kidney and mention hormone secreted by that gland

C which hormone is called fight and flight hormone

D which glands useful in reproduction mention the hormones secreted by those gland

Or

2. Observe the following pyramid of biomass and answer the following questions



a) This pyramid shows a decrease in the biomass as we go up. Where the biomass is lost?

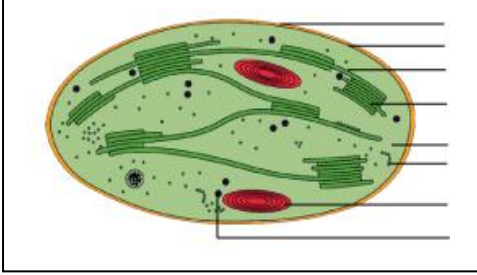
b) What are the producers in this pyramid?

c) How much food is lost at each step roughly?

d) Where do producers get the energy from?

13) Answer the following questions observing given diagram

SA -5



1. Identify the diagram Where are this organelle located?
- 2 Name the diagram and label the parts.
3. What is the main function of this structure?
- 4) what is the main function of this organelle

OR



- 1 identify the diagram
1. Labelle the diagram
2. Write the functions of the different parts
3. How is its structure suitable for its function?

www.sakshieducation.com

SSC PUBLIC EXAMINAIONS - MAR 2017

GENERAL SCIENCE Paper - II (Biological Science)

PART - B

30 Minutes

Marks: 10

I Write Capital letter showing the correct answer for the following questions in the brackets 20 x 1/2 = 10

14. Read the following statements. ()

- a) Protein deficiency causes Kwashiorkor
- b) Marasmus is caused only by calorie deficiency
- A) a and b are true B) a - true, b - false
- C) a - false, b - true D) a and b are false

15) If plant is kept in dark room does not take place ()

- A) Respiration B) Reproduction C) Photosynthesis D) Water transportation

16) Which of the following is not human hormone? ()

- A. Insulin B. Thyroxin. C Oestrogen D . Cytokinine

17) The gap between two neurons is called a ()

- a. Dendrite . b. Synapse C. Axon . d. Impulse

18) What happened to kolleru lake, when the water become alkaline, and turbid ()

- A) Low in dissolved oxygen
- B) High in bio chemical oxygen demand and affects the aquatic animals.
- a) A only true b) B only true c) both are true d) both are not true



19) Identify the activity in the picture ()

- a) knee jerk experiment b) condition experiment c) ortho experiment d) brain experiment

20) Nerve cell which has largest axon present in ()

- A) Shoulder B) leg C) hand D) brain



21) Identify the vegetative propagation method is []
 a) Cutting b) grafting c) layering d) both A and B

22). **Identify the right order?**

- A) Secondary consumer, producer, primary consumer, decomposers,
- B producer primary consumer, secondary consumer decomposers
- C) Producer , decomposers primary consumer, secondary consumer ,
- D) Producer , secondary consumer, primary consumer decomposers,

23) Identify the correct match ()

- 1. Frog [] a) secondary consumer
- 2. Grasshopper [] b) producer.
- 3. Grass [] c) Primary consumers.

A) 1-b, 2-a, 3-c B) 1-a, 2-b, 3-c C) 1-c, 2-b, 3-a D) 1-b, 2-c, 3-a

24) In pea plant after F₂ generation the phenotype ratio is ()

A) 3; 1 B) 1;3 C) 1;1;2 D) 1;2;1

25) I) Sunflower () A. Phototropism ()

ii) Mimosa () B Chemotropism

iii) Cucumber tendril () C. Thigmotropism

Which one is wrongly matched?

- a. 1 b. 3 c. 2 d. All are correct

26). if you cross pollinated the Pure tall (TT) plant with Pure Dwarf (tt) ()

Which kind of plants will grow in the F₁ generation?

- A. All are Dwarf Plants B. All are Tall plants
- C some tall some dwarf c) no more plants

27) Example for Artificial ecosystem ()

- A) River B) lake C) Aquarium D) Pond

28) **Why did Mendel select Pea plant for his experiment?** ()

- a. It contains Unisexual flowers b. It consists bisexual flowers
- c. Self Pollination occurs in it d . B and c

29) Match the following ()

Set - 1

Set - II

- i) Budding () P) Spirogyra
ii) Fission () Q). Bacteria
iii) Fragmentation () R.) Yeast

A) 1- P,2-Q,3-R B) 1-R,2-Q,3-P C) 1-R,2-P,3-Q D)1-P,2-R,3-Q

30) Purpose of percolation Tank ()

- A) Flood control B) increase of ground water C) irrigation D) forest conservation

31) Read the two statements and put correct answer in the bracket. ()

- i) Total Volume of water on earth has 97% of fresh water.
ii) On earth, fresh water has 0.7%-0.8% of ground water.

A) I, ii are true B) i and ii false C) I true ii false D) i, false ii true



32) This diagram belongs to ()

- A) Pyramid of numbers B) Pyramid of energy c)Pyramid of Biomass D) Pyramid of numbers

33 Match the following []

Set - 1

Set - II

- i) Charles Elton () P. Respiration is a combustion process
ii) Charles Darwin () Q Eco system
iii) Lavoisier () R. Evolution

A . i-P; ii-Q; iii-R B. i-R; ii-Q; iii-P C . i-Q; ii-R; iii-P . D i-P; ii-R, iii-Q