

Postal / Sorting Assistants Model Paper

PART - A: REASONING

1. Bima is younger than Rita. Rita is younger than Kala. Kala is elder than Nila. Nila is younger than Bala. Who is the eldest of all of them?

- 1) Rita 2) Kala
3) Bala 4) Nila

2. Karthik is senior to Ganesh. Ganesh is senior to Apparu. Apparu is junior to Raju. Raju is junior to Ganesh. Who is the most senior?

- 1) Ganesh 2) Raju
3) Karthik 4) Apparu

3. Which one set of letters when sequentially placed at the gaps in the given letter series shall complete it?

- b _ t _ a _ / _ add _ d / ba _ _ ad
1) dattac 2) dadtac
3) abdaac 4) adddatd

4. In the given series one term is missing. Choose the correct alternative from the given ones that will complete the series.

- GON, JRQ, MUT. ?
1) NOG 2) PXW
3) JQR 4) TUM

5. A shepherd had 34 sheep's. All but 18 die. How many sheep's were left?

- 1) 16 2) 14
3) 18 4) 34

6. If MADRAS is coded as NBESBT, how is BOMBAY coded accordingly?

- 1) CPOCBZ 2) CPNCPX
3) CPNCBZ 4) CQOCBZ

7. In a certain code, if white means black, black means yellow, yellow means blue, blue means red, red means green, then what is the colour of blood in that language?

- 1) Yellow 2) Blue
3) Red 4) Green

Directions: (8) In each of the following question, from the given alternatives select the word which cannot be formed using the letters of the given word.

8. STANDARDIZATION

- 1) RADIATION 2) RADIO
3) STANDING 4) DISTANT

Directions (9-12): In each of the following questions, select the related letter/word/ number from the given alternatives.

9. SHI: RIJ:: QJK : ?

- 1) TDE 2) PKL
3) UGH 4) VPQ

10. 6: 29: : 24 : ?

- 1) 109 2) 129
3) 119 4) 99

11. Histogram: Bar Chart :: Calligraphy: ?

- 1) Type writing 2) Call-History
3) Hand writing 4) Video call

12. BEHK: PSVY: : ADGJ : ?

- 1) KMOR 2) DHLP
3) PRTV 4) MPSV

Directions (13-14): In each of the following questions, select the one which is different from the other three responses.

- 13.** 1) JKL 2) FGI
3) MPR 4) TUW

- 14.** 1) Cub 2) Duckling
3) Puppy 4) Kitten

Directions (15 -16): In the following questions, arrange the following words as per order in the dictionary.

- 15.** 1) Tutor 2) Wonder
3) Verify 4) Xylophone
5) Umbrella
1) 1, 2, 3, 4, 5 2) 5, 4, 3, 2, 1
3) 1, 5, 3, 2, 4 4) 1, 3, 5, 2, 4

- 16.** 1) Immigrate 2) Immunity
3) Immerse 4) Immolate
5) Immortal
1) 1, 4, 5, 3, 2 2) 3, 1, 4, 5, 2
3) 5, 2, 3, 1, 4 4) 4, 2, 5, 3, 1

Directions (17-18): In each of the following questions, find the odd number from the given alternatives.

- 17.** 1) 9 2) 31
3) 24 4) 48

- 18.** 6, 9, 12, 15, 18, 22

- 1) 12 2) 18
3) 22 4) 6

19. If \times stands for $-$, $+$ means \times , \div means $+$ and $-$ means \div , then what is the value of the given expression?

$$175 - 25 \div 5 + 20 \times 3 - 10 = ?$$

- 1) 77 2) 160
3) 240 4) 2370

20. If $32 + 45 = 3542$, $47 + 72 = 4277$, then $86 + 12 = ?$

- 1) 8621 2) 6281
3) 8216 4) 6218

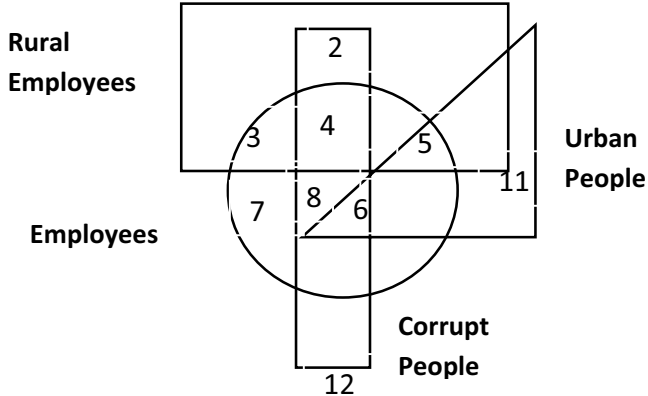
21. A man travels 3 km in the East and turns to South and moves 4 km. How far is he from the starting point?

- 1) 5 km 2) 6 km
3) 2 km 4) 10 km

22. Ganesh is standing at a point. He walks 20 m towards the East and further 10 m towards the South; then he walks 35 m towards the West; and further 5 m towards the East. What is the straight distance in metres between his starting point and the point where he reached last?

- 1) 20 m 2) 5 m
3) 10 m 4) 35 m

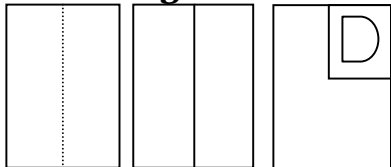
23. Find the urban, corrupt employees in the following diagram:



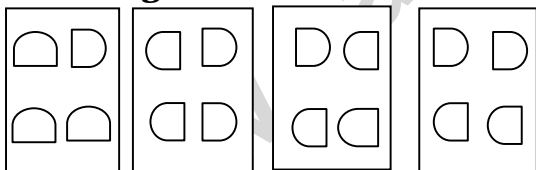
- 1) 11 2) 9
3) 7 4) 12

24. A piece of paper is folded and cut as shown below in the question figures. From the given answer figures, indicate how it will appear when opened?

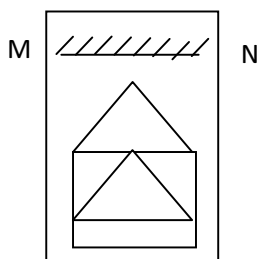
Question Figures



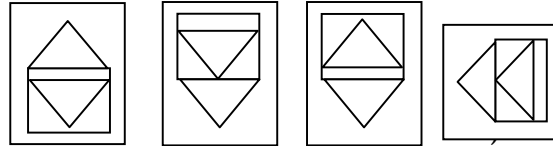
Answer Figures



25. If a mirror is placed on the line of MN, then which of the answer figures is the right image of the given figure?



Answers Figures



PART-B: GENERAL KNOWLEDGE

26. The Finance Commission in India is appointed by

- 1) Prime Minister of India
2) President of India
3) Chairman of Rajya Sabha
4) Speaker of Lok Sabha

27. By which constitutional Amendment Bill, did the parliament lower the voting age from 21 to 18 years?

- 1) 42nd 2) 44th
3) 61st 4) 73rd

28. Dual citizenship is an important feature in which form of government?

- 1) Parliamentary 2) Federal
3) Unitary 4) Authoritarian

29. What is the time limit given to Parliament to pass the ordinance promulgated by the president of India?

- 1) 6 Days 2) 6 Weeks
3) 6 Months 4) 4 Months

30. The Estimate Committee consists of

- 1) 30 members from Lok Sabha
2) 30 members from Rajya Sabha
3) 30 members from both Lok Sabha and Rajya Sabha
4) 22 members from Lok Sabha

31. The Speaker of Lok Sabha is elected by

- 1) All the members of Parliament
- 2) The people directly
- 3) All the members of Lok Sabha
- 4) The members of the majority party in the Lok Sabha

32. The first grammarian of the Sanskrit language was

- 1) Kalhana
- 2) Maitreyi
- 3) Kalidasa
- 4) Panini

33. The famous poet Kalidasa lived in the court of

- 1) Chandragupta I
- 2) Samudragupta
- 3) Kumaragupta
- 4) Chandragupta II

34. Rajatarangini was written by

- 1) Kalhana
- 2) Alberuni
- 3) Harsha Vardhana
- 4) Kautilya

35. Who are the three, among the following who fought against British in 1857 Revolt?

- 1) Kunwar Singh
 - 2) Tantia Tope
 - 3) Nana Saheb
 - 4) S. C. Bose
- 1) 1, 2 & 3
 - 2) 1, 3 & 4
 - 3) 1, 2 & 4
 - 4) 2, 3 & 4

36. Who is regarded as the second Alexander?

- 1) Jalaluddin Khilji
- 2) Mubarak Khilji
- 3) Khusro Khan
- 4) Alauddin Khilji

37. Which of the following is not a natural disaster?

- 1) Earthquakes
- 2) Hoods
- 3) Nuclear Explosion
- 4) Volcanic Explosion

38. Which of the following is the highest peak in undisputed Indian Territory?

- 1) Mount Everest
- 2) Kanchenjunga
- 3) Nanda Devi
- 4) Nanda Parbat

39. Which of the following rivers is not the tributary of Ganga?

- 1) Indravati
- 2) Son
- 3) Gomati
- 4) Yamuna

40. The main function of insulin in the human body is

- 1) To maintain blood pressure
- 2) To help in digestion of food
- 3) To control the level of sugar in the body
- 4) To check the level of iodine in the body

41. Plants which flower only once in their life time are known as

- 1) Polycarpic
- 2) Monocarpic
- 3) Monogamous
- 4) Monogeneric

42. Convex mirrors are used as a real view mirror in motor cycles because

- 1) It forms real image
- 2) It forms erect (upright) image
- 3) It forms smaller image as compared with object

4) All of the above

43. The wall of a dam is made thicker at the bottom than at the top because the pressure exerted by the water on the wall

- 1) Depends on the thickness of the wall
- 2) Increase with height of the wall
- 3) Increase with depth of the wall
- 4) Depends on the area of the wall

44. The lightest radioactive element is

- 1) Deuterium
- 2) Polonium
- 3) Tritium
- 4) Uranium

45. The chemical used in developing photographic films is

- 1) Silver bromide
- 2) Hypo (Sodium Thiosulphate)
- 3) Sodium Sulphate
- 4) Hydroquinone

46. A mixture of water and alcohol can be separated by

- 1) Filtration
- 2) Evaporation
- 3) Decantation
- 4) Distillation

47. Acid rain is caused due to pollution of atmosphere by

- 1) Oxides of Carbon and Nitrogen
- 2) Oxides of Nitrogen and Sulphur
- 3) Oxides of Nitrogen and Phosphorous
- 4) None of these

48. Which of the following is biodegradable?

- 1) Paper
- 2) D.D.T
- 3) Aluminium
- 4) Plastic

49. What is the percentage coverage of Tropical Forest on earth's land mass?

- 1) 7
- 2) 12
- 3) 17
- 4) 25

50) Which one of the following rivers in India has been declared as the National River?

- 1) Godavari
- 2) Krishna
- 3) Ganges
- 4) Narmada

PART - C: MATHEMATICS

51) The value of $\frac{(0.03)^2 - (0.01)^2}{0.03 - 0.01}$ is

- 1) 0.02
- 2) 0.004
- 3) 0.4
- 4) 0.04

52. The next number of the sequence 3, 5, 9, 17, 33 is

- 1) 65
- 2) 60
- 3) 50
- 4) 49

53. The H.C.F. of two numbers is 8. Which one of the following can never be their L.C.M.?

- 1) 24
- 2) 48
- 3) 56
- 4) 60

54. A, B and C rent a pasture. A puts in 10 oxen for 7 Months. B 12 oxen for 5 Months and C 15 oxen for 3 Months for grazing. If the rent of the pasture is Rs. 175/- how much must C pay as his share of rent?

- 1) Rs.45/-
- 2) Rs.50/-
- 3) Rs.55/-
- 4) Rs.60/-

55. A reduction of 20% in the price of oranges enables a man to buy 5 oranges more for Rs. 10/-. The price of an orange before reduction was-
- 1) 20 paise 2) 40 paise
3) 50 paise 4) 60 paise
56. In an examination, a student who gets 20% of the maximum marks fails by 5 marks. Another student who scores 30% of the maximum marks gets 20 marks more than the pass marks. The necessary percentage required for passing is-
- 1) 32% 2) 23 %
3) 22 % 4) 20 %
57. When 60 is subtracted from 60 % of a number, the result is 60. The number is-
- 1)120 2)150
3)180 4) 200
58. If 3 men and 6 women can do a piece of work in 16 days, in how many days can 12 men and 8 women do the same work?
- 1) 4 days 2) 5 days
3) 3 days 4) 2 days
59. On what sum does the difference between the compound interest and simple interest for 3 years at 10 % is Rs.31?
- 1) Rs.1500 2) Rs.1200
3) Rs.1100 4) Rs.1000
60. At what percent per annum will Rs.3000 amounts to Rs.3993 in 3 years if the interest is compounded annually?
- 1) 9% 2) 10 %
3) 11 % 4) 13 %
61. A six digit number is formed by repeating a 3 digit number : For example 256, 256 or 678, 678 etc. Any number of this form is always exactly divisible by:
- 1) 7 only 2) 11 only
3) 13 only 4) 1001
62. Given that $0.111 = 1/9$; 0.444 is equal to-
- 1) $1/90$ 2) $2/45$
3) $1/99$ 4) $4/9$
- 63) A tap can empty a tank in one hour. A second tap can empty it in 30 minutes. If both the taps operate simultaneously, how much time is needed to empty the tank?
- 1) 20 minutes 2) 30 minutes
3) 40 minutes 4) 45 minutes
64. The volume of right circular cylinder whose height is 40 cm, and circumference of its base is 66 cm. is
- 1) 55440 cm^3 2) 3465 cm^3
3) 7720 cm^3 4) 13860 cm^3
65. A shopkeeper marks his goods 20% above cost price, but allows 30% discount for cash. His net loss is
- 1) 8 % 2) 10 %
3) 16 % 4) 20 %

- 66. The arithmetic mean of the scores of a group of students in a test was 52. The brightest 20 % of them secured a mean score of 80 and dullest 25 % a mean score of 31. The mean score of remaining 55% is approximately:**
- 1) 45% 2) 50%
3) 51.4% 4) 54.6%
- 67. The sum and product of 2 numbers are 12 and 35 respectively. What will be sum of their reciprocals?**
- 1) $1/3$ 2) $1/5$
3) $12/35$ 4) $35/12$
- 68. The simplified value of $6\sqrt{(27)^{-\frac{2}{3}}} + (8)^{\frac{2}{3}}$ is**
- 1) $6\sqrt{35}$ 2) $\frac{6}{\sqrt{35}}$
3) $\sqrt{13}$ 4) $6\sqrt{6}$
- 69. A number, when divided by 65 gives the remainder 43. If it is divided by 13, the remainder will be**
- 1) 1 2) 4
3) 6 4) 9
- 70. The missing term of the sequence 7, 26, 63, 124, 215, 342____, 728 is**
- 1) 391 2) 421
3) 481 4) 511
- 71. The average of four consecutive even numbers is 27, the largest of these numbers is**
- 1) 28 2) 26 3) 32 4) 30
- 72. The price of sugar is increased by 25%. By what percent should a house hold cut down its consumption of sugar to keep the family budget intact?**
- 1) 25% 2) $22\frac{1}{2}\%$
3) 20% 4) $17\frac{1}{2}\%$
- 73. A retailer buys 40 pens at the marked price of 36 pens from a wholesaler. If he sells them by giving a discount of 1%. What is the profit percent?**
- 1) 9% 2) 10%
3) $10\frac{1}{9}\%$ 4) 11%
- 74) In a class 60% of the students pass in Hindi and 45% pass in Sanskrit. If 25% of them pass in at least one subject, what percentage of the students fails in both the subjects?**
- 1) 80% 2) 75% 3) 20% 4) 25%
- 75) How many seconds will a 500 meter long train take to cross a man walking with a speed of 3 kmph in the direction of the moving train if the speed of the train is 63 kmph?**
- 1) 25 2) 30 3) 40 4) 45

PART-D: ENGLISH

Directions (76-78): In the following questions some of the sentences have errors and some have none. Find out which part of the sentence has an error. The number of that part is your answer. If there is no error the answer is (4).

76. I don't (1)/ want to (2)/ lose it. (3) / No error. (4)

77. Do not (1)/ get panicked (2) / in emergencies. (3) / No error. (4)

78) Sometimes (1) / I get angry (2) / on her. (3) / No error. (4)

Directions (79-81): In the following questions sentences are given with blanks to be filled in with an appropriate word(s). Four alternatives are suggested for each question. Choose the correct alternative out of the four.

79. I have _____ Laxmi for the past twelve years.

- 1) Know 2) Knew
3) Known 4) Knows

80. He did not qualify ----- the job.

- 1) For 2) To
3) Against 4) With

81. _____ the last ten years we have been victims of abuse.

- 1) From 2) For
3) Before 4) Since

Directions (82-84): In the following questions out of the four alternatives, choose the one which best expresses the meaning of the given word.

82. ILLICIT

- 1) Unlawful 2) Disgraceful
3) Improper 4) Infamous

83. OBSTINATE

- 1) Antagonistic 2) Abstruse
3) Intrinsic 4) Stubborn

84. DANGEROUS

- 1) Safe 2) Strong
3) Hazardous 4) Secure

Directions (85-87): In the following questions choose the word opposite in meaning to the given word.

85. AFFLUENT

- 1) Famous 2) Insignificant
3) Poor 4) Skilled

86. OBSCURE

- 1) Vacant 2) Seldom
3) Distinct 4) Unusual

87. AMBIGUOUS

- 1) Concealed 2) Precise
3) Complete 4) Magnified

Directions (88-90): In the following questions four alternatives are given for the idiom / phrase printed in bold in the sentence. Choose the alternative which best expresses the meaning of the idiom / phrase.

88. The angry hockey players **gave vent to their feelings**.

- 1) To express 2) To emphasize
- 3) To suppress 4) To dismiss

89. I trust you will **bear with** me a few minutes more.

- 1) Have patience with
- 2) Support
- 3) Carry the burden for
- 4) Be in control for

90. As usual he is **blowing his own trumpet**

- 1) Refusing to use anybody else's trumpet
- 2) Playing tune on the trumpet
- 3) Praising himself
- 4) Praising himself and others

Directions (91-93): In the following questions a part of the sentence is printed in bold. Below are given alternatives to the bold part at (1), (2) and (3) which may improve the sentence. Choose the correct alternative. In case no improvement is needed your answer is (4).

91. He behaves **like coward**

- 1) Cowardly
- 2) In a cowardly manner
- 3) As if he was a coward
- 4) No improvement

92. **Neither of them** went to the cinema.

- 1) Both of them did not go
- 2) Both did not go
- 3) Neither went

4) No improvement

93. **I used to have** very thick hair

- 1) Use to have
- 2) Used to having
- 3) Used to had
- 4) No improvement

Directions (94-97): In the following questions out of the 4 alternatives, choose the one which can be substituted for the given words/phrase.

94. To run away with a lover

- 1) Deceive 2) Cheat
- 3) Escape 4) Elope

95. Science of heredity

- 1) Hereditary 2) Genetics
- 3) Genesis 4) Inheritance

96. Succession of rulers belonging to one family.

- 1) Dynasty 2) Lineage
- 3) Ancestry 4) Progeny

97. To cut something into two pieces.

- 1) Severe 2) Sever
- 3) Sewer 4) Sow

Directions (98-100): Four words have been written out of which three are correctly spelt and one is wrongly spelt. Find the wrongly spelt word out of the four responses.

98. 1) Eminent 2) Iminent
3) Eloquent 4) Exuberant

99. 1) Tailor 2) Sculpter
 3) Doctor 4) Fitter

100. 1) Mathematician
 2) Statistician
 3) Dietician
 4) Physician

Answers

- | | | | | |
|-------|-------|-------|-------|--------|
| 1) 2 | 2) 3 | 3) 4 | 4) 2 | 5) 3 |
| 6) 3 | 7) 2 | 8) 3 | 9) 2 | 10) 3 |
| 11) 3 | 12) 4 | 13) 1 | 14) 2 | 15) 2 |
| 16) 2 | 17) 2 | 18) 3 | 19) 1 | 20) 3 |
| 21) 1 | 22) 1 | 23) 2 | 24) 2 | 25) 2 |
| 26) 2 | 27) 3 | 28) 2 | 29) 2 | 30) 1 |
| 31) 1 | 32) 4 | 33) 4 | 34) 1 | 35) 1 |
| 36) 4 | 37) 3 | 38) 3 | 39) 1 | 40) 3 |
| 41) 2 | 42) 3 | 43) 3 | 44) 3 | 45) 1 |
| 46) 4 | 47) 2 | 48) 1 | 49) 1 | 50) 3 |
| 51) 4 | 52) | 53) 4 | 54) 1 | 55) 3 |
| 56) 3 | 57) 2 | 58) 3 | 59) 4 | 60) 2 |
| 61) 4 | 62) 4 | 63) 1 | 64) 4 | 65) 3 |
| 66) 3 | 67) 3 | 68) 3 | 69) 2 | 70) 4 |
| 71) 4 | 72) 3 | 73) 2 | 74) 2 | 75) 2 |
| 76) 3 | 77) 2 | 78) 3 | 79) 3 | 80) 1 |
| 81) 2 | 82) 1 | 83) 4 | 84) 3 | 85) 3 |
| 86) 3 | 87) 2 | 88) 1 | 89) 1 | 90) 3 |
| 91) 3 | 92) 4 | 93) 2 | 94) 4 | 95) 2 |
| 96) 1 | 97) 2 | 98) 2 | 99) 2 | 100) 1 |